

PRESCRIBED BURN PLAN



SIGNATURE PAGE

State: Missouri

Preserve/Site: Dunn Ranch

Burn Unit Number/Name: Units W1A and W1B / Westlake North

Fire Planner, prepared by:

Name: Nathaniel Klink

1/02/2019

Title: Burn Crew Member

Signature

Date

Fire Manager Approval:

Name: Tom Fielden

01/03/2019

Title: Fire Manager

Signature

Date

Consequence Rating: Not High High

Complexity Rating: Low Medium High

Minimum Burn Boss Qualification: RXB3 RXB2 RXB1

Technical Review Required Yes No

Technical Review attached Yes No

Expiration Date of Plan: 01/03/2024

Disclaimer: The following prescribed burn unit plan (the "Plan") was prepared by or on behalf of The Nature Conservancy. To the extent the Conservancy has authorized a third party to use this Plan, the authorization is explicitly limited to the prescription set forth in the Plan. In addition, use of the Plan is not authorized if the Conservancy gives verbal or written indication that burning is not appropriate on any given day. Any use of this Plan is at the user's own risk. By using this Plan, the User agrees to indemnify and hold the Conservancy and its employees harmless from any injury or loss arising from the burn activities or use of the Plan.

DESCRIPTION OF BURN AREA

GEOGRAPHIC LOCATION

State/ County: Missouri/ Harrison
Ownership of burn area: The Nature Conservancy
T/R/Sec.: T66N, R28W, Section 19
Burn Unit (acres): 160 acres
Burn Perimeter (distance): 2 miles
Lat/Long: W1A- 40.504353, -94.104904 x W1B- 40.504343, -94.099766

NARRATIVE DESCRIPTION

Burn area description:

The burn unit is a gently rolling expanse of warm season grasses and forbs. The unit is a square 160 acres. Fuels outside the burn unit include a planted prairie to the west, cool season pasture across a gravel road to the east, a mix of warm season grasses and forbs across the gravel road to the south, and ¼ mile of cool season CRP and ¼ mile of cool season grass to the north. There is a small pond located in the northwest quarter of the unit. The unit is bordered by a standard agricultural barbed wire fence on the north, east, and south borders. There is no fence on the west border. There are two gates in the south fence line onto the gravel road. Gates are shown on the Fire Unit Crew Map. There is a grain bin and old storage shed along the road in the southeastern part of the unit.

Pictures of representative fuels and topography:



Unique features: none

VEGETATION AND FUELS

Within Burn Area :

Vegetation Types	Fuel Models	% of Unit Area	% Slope	Aspect
Prairie Planting (grass/forb mix)	GR6	100%	0-20%	All

ADJACENET FUELS DESCRIPTION:

Fuels outside the burn unit include a prairie to the west, cool season pasture across a gravel road to the east, a mix of warm season grasses and forbs across the gravel road to the south, and ¼ mile of cool season CRP and ¼ mile of overgrazed cool season grass to the north.

GOALS AND OBJECTIVES OF BURN

FIRE MANAGEMENT GOALS

- Improve prairie restoration planting condition by reintroducing fire to reduce woody vegetation encroachment and increase native prairie grasses and forb diversity.

SPECIFIC BURN OBJECTIVES

- Reduce weed species; reduce litter accumulations to encourage herbaceous vegetation diversity in prairie planting; reduce woody species.

PRESCRIPTION

FUEL AND WEATHER PRESCRIPTION

Fuel Parameters:	MIN	PREFERRED	MAX
1-Hour Fuel Moisture (%)	5%	Any in Range	11%
10-Hour Fuel Moisture (%)	NA		NA
100-Hour Fuel Moisture (%)	NA		NA
Live Fuel Moisture (%)	50		100
Other (e.g. KBDI, Live/dead ratio):	NA		NA
Weather Parameters:			
Air Temperature (°F)	35	Any in Range	75
Relative Humidity (%)	25	Any in Range	70
Days Since Rain		Any	
20 ft wind speed (mph)	5	Any in Range	15
Wind Direction(s)	1	225-135 SW-SE	360
Midflame Windspeed (mph)	1.2	Any in Range	6.1
Atmospheric Mixing Height (ft)	500m	>500m	

PRESCRIBED FIRE BEHAVIOR

Fire coverage should be greater than 80% in all grass fuels. Some interior strip firing may be needed to insure rapid burnout along the lower slopes of the draws after perimeter fuels are securely burned. Fire behavior with enough intensity to top-kill small diameter woody vegetation is desired.

PREDICTED BEHAVIOR FOR FREE BURNING FIRE

FUEL MODEL GR6	ACCEPTABLE FIRE BEHAVIOR RANGE		
	MIN	PREFERRED	MAX
Rate of spread (ch/hr)	HF-2.1, BF-0.3	Any in Range	HF-126, BF-5.4
Headfire flame length (feet)	1.2	Any In Range	17.5
Backfire flame length (feet)	0.5	Any in Range	4.1
Spotting distance (mi)		Any	
Probability of ignition (%)	22%	Any	64%

SMOKE MANAGEMENT

Downwind/down drainage smoke sensitive areas:

- Lightly used gravel roads on the east and south border of the unit.
- Residence 1/8 mile to the northeast.

Map of smoke sensitive areas attached? **Yes**

Describe smoke management techniques:

Negative impact to smoke sensitive areas can be avoided with fair to good smoke lofting conditions and avoiding a southwest wind direction, if possible. Surface fire should be completely out at sunset if transport winds are predicted to fall below 9 mph. If smoke obscures either of the gravel roads, crews will monitor traffic, stop vehicles, and manage through traffic as necessary. Any crew persons working in intense smoke for extended periods will notify their crew boss to be rotated with other holding crews if necessary to minimize extended continuous personnel exposure to thick smoke.

Prohibited wind directions: none

PERSONNEL AND EQUIPMENT

CREW ORGANIZATION

Burn Boss(es) qualification level: One TNC approved Burn Boss, RXB2

Minimum number and types of firefighters required: Six total fire fighters minimum, FFT2 minimum or assisting organization equivalent

Conducted burns will normally have six firefighters (FFT2 minimum) in addition to the burn boss (RXB2)

EQUIPMENT

Equipment Item	Quantity	Source
Engine	1	TNC
Radios	6	TNC
Weather Kit	1	TNC
First Aid Kit	1	TNC
PPE for all personnel	Set each	TNC
Headlamps for all personnel if burning after dark	NA	
Water Pack	4	TNC
Flappers	6	TNC
Fire Rakes	6	TNC
5 gal Water Jug*	6	TNC
UTV or ATV with pump units	2	TNC

*OR equivalent volume of water available along the fire line

Back Up Water Resource: Hydrant at bison corral along West 180th Ave., pond in Unit W2 is a good draft source located just south of the gravel road west of the office complex.

Justification for exemption:

- Fire Shelters are exempted from required use for this burn. They are available but not required. Each firefighter must carry an ignition source (matches, lighter or fusee) at all times.

SCHEDULING

This is an ecological burn that should take place within the dormant season to control encroachment of woody vegetation. The prescribed fire operation time window is in between the month of September and April. This reduces the amount of moisture in the fuel, which mitigates smoke issues.

- Burn Duration:
 - Baseline preparation: 1 hr
 - Spreading fire: 2 hours
 - Mop-up: 1 or more hours
 - Total duration: 4 or more hours
- Will this burn be implemented or continue into night-time? **No**
- Will the burn exceed 1 burning period? **No**

PRE-BURN PREPARATIONS

PERMITS

Burn Permit/Notification Required? Yes / **No**
 Source(s):

Air Quality Permit/Notification Required? Yes / **No**
 Source(s):

Burn Permit application/approval process? **N/A**

Pre-Burn Notifications:

Name	Date (before, day of, after burn)	Method (email, mail, phone, etc)	Contact Information
Harrison County Sheriff	Day of	Phone	660-425-3199 or 911
Cloyd Richardson	Day of	Phone	660-867-5498
Parkhurst Residence	Day of	Personal contact	660-867-5498
Missouri TNC Fire Manager, Tom Fielden	Day of	Phone or Personal Contact	530-905-8870 cell 573-323-8790 office

FIREBREAK PREPARATIONS

Firebreaks on the north border will be mowed at least 20’ wide with a 2’ wide strip within this mowed break mowed closely (<1”) and raked or blown free of thatch prior to the burn. The fire break on the west is a harvested bean field. In future years this fire break will be prepared the same as the north fire break. The fire breaks on the east and the south will be the gravel roads. The grain bin and old storage shed will have a fire break prepared the same as the north fire break.

WEATHER AND AIR QUALITY FORECASTS

A weather forecast will be obtained from the National Weather Service on the morning of the burn. A forecast for burn day weather, evening and nighttime weather and smoke dispersion and second day extended weather will be obtained. A spot weather forecast may be obtained from : www.weather.gov/spot/monitor

COMMUNICATIONS

- Communications plan:

Standard TNC Fire frequency is 151.652 MHz Tx and Tx will be the primary method of communication via two-way hand held radios. At a minimum, one radio will be with Burn Boss and with each line or crew boss, and a radio in each engine on site. All mobile radios will be checked for compatibility prior to the burn. A cellular phone will be available on site. Any dead service areas will be determined and noted in pre-burn briefing.

EMERGENCY ASSISTANCE

Fire: North Harrison VFD 660-425-3199
 Law Enforcement: Harrison County Sheriff 660-425-3199

Medical: Harrison County Sheriff 660-425-3199
TNC Attorney: Michelle Albert 720-974-7031
Fire Manager: Tom Fielden 530-905-8870 cell and 573-323-8790 office
Nearest land-line telephone to unit: Dunn Ranch Office, 16970 West 150th Street, Hatfield,
MO 64458; 660-867-3866.

Cell coverage notes: Acceptable coverage from most providers

- Public Access/Conflicts with Public use: Signs will be posted at all intersections where smoke may be visible. There are no public trails or uses of note to consider.
- Public relations: Local law enforcement, rural fire protection agencies and preserve neighbors will be notified prior to the burn.

SAFETY AND MEDICAL

First Aid kits are located in each Engine and ATV. Medical response qualifications of crew members will be announced to all individuals participating in fire operations. Nearest Hospital is in Bethany, MO. From preserve travel east on Highway M to Highway 69. Turn right onto Highway 69 and go about 18 miles to the stop light in Bethany. The hospital is just southeast of the stop light.

Safety zones and Escape Routes: Escape Routes will be along established fire lines. Safety Zones will generally be the burned area (the black) after an adequate sized area is burned. Line supervisors (RXB2, ENGB and/or FFT1) will establish and maintain adequate Escape Routes and Safety Zones throughout operations and communicate this to all fire fighters.

Unusual hazards to crew

- Irregular topography will produce midflame winds differing from prevailing 20' winds.
- Intense fire behavior generated by grass fuels burning upslope and with the wind.
- Exposure to smoke

IGNITION

- Ignition Plan:
The perimeter of the unit will be ignited using two ignition/holding crews starting at a common point on the downwind side of the burn unit firing in opposite directions around the perimeter. A safe amount of black will be achieved along the perimeter of the unit before a head fire is lit on the up wind side of the unit. Interior ignition may be necessary to speed burnout. Only experienced personnel familiar with the interior of the unit will ignite the interior of fire units. The Burn Boss will decide which ignition methods are used and coordinate timing.
- Fire sensitive areas:
A grain bin, and old storage shed, and some tractor implements are located along the gravel road on the south side of the fire unit.

HOLDING

- **Holding Plan:**
Holding will be accomplished along the perimeter with crew persons with water and hand tools immediately following ignition. All perimeters may be patrolled with truck or ATV.
- **Type and location of water source:**
Garden hose hydrant at Dunn Ranch headquarters south of fire unit. Hydrant is located at NW corner of red shop building. Pond in northwest corner of the fire unit is a good draft source.

CONTINGENCY PLAN

Escape response procedures:

- Burn Boss will declare an escape if the fire breeches control lines and is beyond the immediate control of existing fire personnel. Minor spots will be immediately extinguished by line crews. In the event of an escape, crew members will be designated to contain and patrol the burn unit fire. All other crew will engage in direct or indirect suppression efforts as directed by the burn boss. Any escape threatening adjacent property will require the immediate contact of local fire department crews to help contain the escape and protect adjacent property.
- In the case of a wildfire the Burn Boss will assign on-site personnel to keep containment of the prescribed fire unit fire and direct any additional resources to begin initial attack of the escaped fire. Change of command will be announced when fire suppression agencies take over control.

Location, description, and availability of nearest emergency resources:

Description	Contact Point Person	Contact Method (phone, radio frequency)	Availability	Response Time (from time of call to arrival on scene)
North Harrison VFD, Eagleville		660-425-3199 or 911	Volunteer Based	30 min
Harrison County Sheriff, Bethany		660-425-3199 or 911	Variable	45 min
Ambulance dispatched through sheriff		660-425-3199 or 911	Variable	30 min

Secondary control lines:

- North: old county gravel road ½ mile north
- South: dirt road 1 mile south

- East: road 1 mile east
- West: State Hwy D ½ mile to the west

MONITORING

- Fire behavior and weather monitoring:
A site specific weather forecast will be obtained on the morning of the burn. A forecast for burn day weather, evening and nighttime weather and smoke dispersion and second day extended weather will be obtained. On-site weather will be measured within one hour of ignition, and during and after the burn as needed. Fire behavior monitoring will be observed by ignition crews and reported to burn boss in burn After Action Review.

POST-BURN ACTIVITIES

- Mop-up:
Perimeter threats will be mopped up immediately following ignition by holding crews. At least two crew members will remain on site until all surface fire is extinguished. Periodic monitoring of the unit, including monitoring prior to 1000 hours the day or days after the burn, will be done by crew or designated personnel following the burn until unit is cold.

ATTACHMENTS

Go/No Go Checklist
Complexity Analysis
TNC Documentation
Technical Reviewer Checklist
Maps
Burn Unit Map (fuels/crew)
Unit Location Map
Fire Unit Aerial Map
Smoke Screening Map
Neighbor Contact Map
Contingency Map

November 14, 2014

**GO/ NO GO CHECKLIST: PRE-BURN, CREW BRIEFING, TEST FIRE and POST-BURN CHECKLIST
Prescribed Burn (Broadcast burning)**

Site Name: _____ Burn Unit: _____ Date: _____

Has the area (inside and outside the unit) experienced unusual drought conditions or does it contain above-normal fuel loadings which were not considered in the prescription development? If YES, go to question below. If NO, continue with Section A.	YES	NO
If YES, have appropriate changes been made to plans for ignition, holding, mop-up and patrol? If YES, continue with Section A. If NO, stop and consult with Fire Manager.		

A. PRE-BURN (Prior to Crew Briefing)

- Fire Unit is as described in plan and copy of plan is on site.
- Required firebreaks complete and are consistent with current and predicted conditions.
- Certified Burn Boss present, permits obtained. Give permit #'s: _____
- Required number of crew present with required protective clothing.
- Weather forecast obtained and within prescription. Long-range forecast checked for severe weather.
- Official and neighbor notifications complete.
- Required equipment for holding, weather monitoring, ignition and suppression is on-site and functioning.
- Crew has reviewed equipment.
- Planned ignition and containment methods are appropriate for current and predicted conditions.
- Planned contingencies and mop-up are appropriate for current and predicted conditions.
- List of emergency phone numbers are in each vehicle.
- Off-site contingency resources are operational and available.

B. CREW BRIEFING

- Each crew member has a map

Each item below has been discussed with crew:

- Burn unit size and boundaries.
- Burn unit hazards and safety issues, including LCES (*IRPG pg. 7*)
- Purpose of burn, anticipated fire and smoke behavior.
- Organization of crew and assignments.
- Methods of ignition, holding, mop-up, communications.
- Contact with the public; traffic concerns.
- Location of main roads, vehicles, keys, and nearest phone.
- Location of back-up equipment, supplies, and water.
- Contingencies for escaped prescribed fire.
- Planning for medical emergency (*IRPG pg. 2*)
- WUI concerns.
- Answer questions from crew.
- Ask crew if they wish to "turn down" an assignment or participation in the burn (*IRPG pg. 19-20*)

C. TEST FIRE

- On-site weather and fuel conditions are within prescription and consistent with forecast.
- Test burn conducted; fire and smoke behavior within prescribed parameters.

D. POST BURN CHECKLIST

- Mop-up completed as described in burn plan.
- Night patrol assigned, if needed.
- Day shift assigned for days following burn, if needed.
- Notifications of completed burn, if required.
- After Action Review (AAR) completed with crew.

Burn Boss sign and date form when burn is completed.

Burn Boss: _____

Date: _____

PRESCRIBED FIRE COMPLEXITY RATING
WORKSHEET



Site: Dunn Ranch	Unit: W1A and W1B	State: MO	Date:12/19/18
Complexity Score (circle)			
<i>Low (44-80 pts)</i>	<i>Moderate (81-150 pts)</i>	<i>High (151-220 pts)</i>	

Weighting Factor x Complexity Value = Total points. Sum of Total points = Complexity Score

Complexity Element	Weighting Factor	Complexity Value (1-5)	Total Points	Rationale and/or Mitigation Procedures (Use for clarification of rationale and/or actions.)
1. Safety	5	1	5	Safety concerns have been addressed
2. Difficulty of Containment	5	1	5	Wide burn breaks, adjacent fuel is not particularly receptive to fire, gravel roads for contingencies

3. Fuels and Fire Behavior	5	1	5	Mostly grass
4. Wildland / Urban Interface	5	1	5	Few neighbors
5. Objectives	4	1	4	Maintenance (control woody vegetation)
Sub Total (Page 1)			24	

Complexity Element	Weighting Factor	Complexity Value	Total Points	Rationale and/or Mitigation Procedures
6. Management Organization	4	1	4	Minimum 6 person crew with 1 engine
7. Contingency Planning and Resources	4	3	12	Local VFD could take up to ½ to respond
8. Natural, Cultural, Social Values	3	1	3	None
9. Air Quality Values	3	1	3	Flashy fuels burn hot and fast. Little to no mop up. Burning period is one day with few to no heavy fuels. Smoke will only be visible for a short time
10. Logistics	3	1	3	Easy access. Duration of fire is one day

11. Tactical Operations	2	1	2	Simple ignition plan. Minimal holding due to wide breaks	
12. Cooperator Coordination	1	1	1	No cooperators	
Sub Total		Page 2	28	Additional Comments:	
		Page 1	24		
Complexity Score		52		Rated by: Nathaniel Klink	

Attachment: TNC Documentation

Complete for all controlled burns on TNC property, and for all burns contracted or led by TNC.

I. ALL BURNS

A. CONSEQUENCE ANALYSIS:

Does this burn have the potential for High Consequences from smoke or an escaped fire?

Yes No

If Yes, the OU Director must be briefed on the burn prior to conducting the burn.

Date OU Director briefed: _____

B. REVIEW OF LAWS

Review of Laws and Regulations complete?

Yes No

C. TNC FIRE MANAGEMENT GUIDELINE EXEMPTIONS

Any exemptions in this burn plan to TNC Guidelines?

Yes No

If Yes, justification for exemption: _____

D. BURN AREA OWNERSHIP:

Describe the ownership/management responsibility of the area to be burned:

Are TNC lands involved?

Yes No

Are government owned lands involved?

Yes No

Are third party *private* lands involved?

Yes No

If third party private lands are involved, then complete *Section II* below.

E. FIRE PLANNING:

Is the need for and use of fire described in an appropriate management plan? Yes No

(A management plan may take different forms: such as existing preserve plans, site fire management plans, forestry plans, restoration plans, grazing plans, or the like.)

If No, the Burn Plan must clearly describe how the burn advances conservation goals.

II. Private Land Burns

Completed for all TNC-led or contracted burns on third party private lands.

A. PERMISSIONS AND WAIVERS:

Permissions/Releases/waivers attached?

Yes No NA

B. CONFLICT OF INTEREST*:

“TNC Disclosure Form for Conflicts of Interest” completed by the landowner, or an alternative conflict analysis been completed if the landowner refused to complete the Disclosure Form?

Yes No NA

Has the conflict screening identified a “covered person”?

Yes No NA

(If no, no further analysis required)

If Yes, has the proposed burn been approved by TNC’s Conflict Committee and are any conditions imposed by the Committee being followed?

Yes No

(If No, consult with TNC attorney, and explain how resolved)

C. PRIVATE BENEFIT*:

Private Benefit analysis indicates that:

Conservation is the primary purpose for performing the burn?

Yes No

Any landowner benefit is *de minimis* or incidental to the conservation outcome? Yes No

(If “No” to any of the above, consult with TNC attorney and attach/explain how resolved)

***See Memo entitled Conflict and Private Benefit Issues for Prescribed Burns on Private Lands on the TNC Intranet Fire Manual for further guidance.**

State: Missouri	Site: Dunn Ranch W1A and W1B
-----------------	------------------------------

Date: 12/27/2018	Approved by: Tom Fielden
------------------	--------------------------

High Consequence Not High Consequence

Overview:
 The Consequence Analysis, a required element of TNC Prescribed Burn Unit Plans, evaluates the potential for financial loss or significant harm to TNC reputation or partnerships, should damage to third parties occur from escaped fire or from smoke. As part of the burn planning process, the Consequence Analysis identifies burns with characteristics that may result in a high level of exposure to financial or reputational loss from an adverse unexpected event. These “High Consequence” burns will require the OU Director to be briefed on the burn prior to implementation.

For more information on filling in this element, see TNC document “TNC Complexity Analysis Guidance”.

Factor identified for planned burn areas		CONSEQUENCE ANALYSIS FACTORS		
YES	NO	DESCRIPTION	EXAMPLE	SITE CONDITIONS
	X	Offsite values High Potential for significant damage claims due to risk to improvements or other fire sensitive resources in the area	Highly flammable wildland fuels contiguous to high value (>\$1,000,000) improvements, such as housing developments, historic buildings, high public use recreation areas, or commercial or industrial developments.	
	X	Smoke sensitive areas Burn Plan identifies one or more highly smoke sensitive areas that are not easily mitigated	Hospitals, schools, major roads, airports or factories, each with low tolerance for smoke intrusion, nearby on multiple sides of a burn unit	
	X	Public/Political sensitivity Burn Is likely to attract significant negative public, political, or media attention; significantly aggravated by any unexpected or adverse event	Burn to be conducted in area that has been impacted recently by damaging wildfire or escaped prescribed fire; or in an area with frequent hostile political/ community response to planned burning	

Secondary Factors					
ADDITIONAL FACTORS		X	Burn Complexity A high degree of technical difficulty or the possibility for multiple adverse operational events or situations to occur	Complexity Rating of High, after mitigation measures incorporated into planning	
		X	Escape Containment Contingency planning identifies high degree of difficulty in Initial Attack and containment of escaped fire	Contiguous wildland fuels outside burn unit extend into neighboring lands with potential for rapidly moving wind-driven escaped fires and limited avenues for secondary containment or indirect attack of escaped fire; or Burn objectives Require burning under drought or other conditions typically regulated by burn bans or public burn safety warnings	
		X	Residual Burning Fuels Burn unit contains fuels with potential for prolonged smoldering combustion, resulting in extended potential for fire escape or smoke intrusions	Burn unit contains peat, heavy slash, or other fuels that will likely ignite and burn for many days, weeks or even months	
		X	Third Party Lands Conservancy burn on third party lands where landowner is unwilling to provide liability waiver, indemnification to the Conservancy against third party claims, or possess adequate insurance	Conservancy to burn on a farm as part of an ongoing private-lands conservation project, but landowner does not have insurance and/or is unwilling to indemnify the Conservancy from potential damage claims resulting from the burn	

TNC Technical Reviewer Checklist:

State MO Site Dunn Ranch


Prescribed burn unit name: Units W1A W1B/Westlake North

Rate each element in the following table with an “S” for Satisfactory or “U” for Unsatisfactory. Use Comment field as needed to support the element rating.

PRESCRIBED FIRE PLAN ELEMENTS	RATING	COMMENTS
Signature page	A	
Description of Prescribed Burn Area	U	Pg. 2 and 3, see notes on BP.
Goals and Objectives	A	
Prescription	A	
Smoke Management	A	
Personnel and Equipment	U	Pg. 5 see notes on BP (Remove org chart).
Pre-Burn Considerations	A	
Communication	A	
Safety and Medical	A	
Ignition Plan	A	
Holding Plan	A	
Contingency Plan	U	Page 9) Still unclear who will declare an escape. Hint- In the event of an escape the Burn Boss IS the Responsible party to declare an escaped fire.
Monitoring (on-site weather, fire and smoke)	A	
Post-Burn Activities	A	
Attachment: Go/No Go Checklists	A	
Attachment: Complexity Analysis	A	
Attachment: TNC Documentation	A	
Attachment: Maps- Burn Unit Map	A	
Attachment: Maps- Vicinity Map	A	
Attachment: Maps- Contingency Map	U	Need to include.
Attachment: Maps- Smoke Map	A	
Attachment: Maps- other maps		
Technical Review Check list		Return with Tech Review with final edited Burn plan.

Approval is recommended subject to the completion of all requirements listed in the comments section, or on the Prescribed Fire Plan.

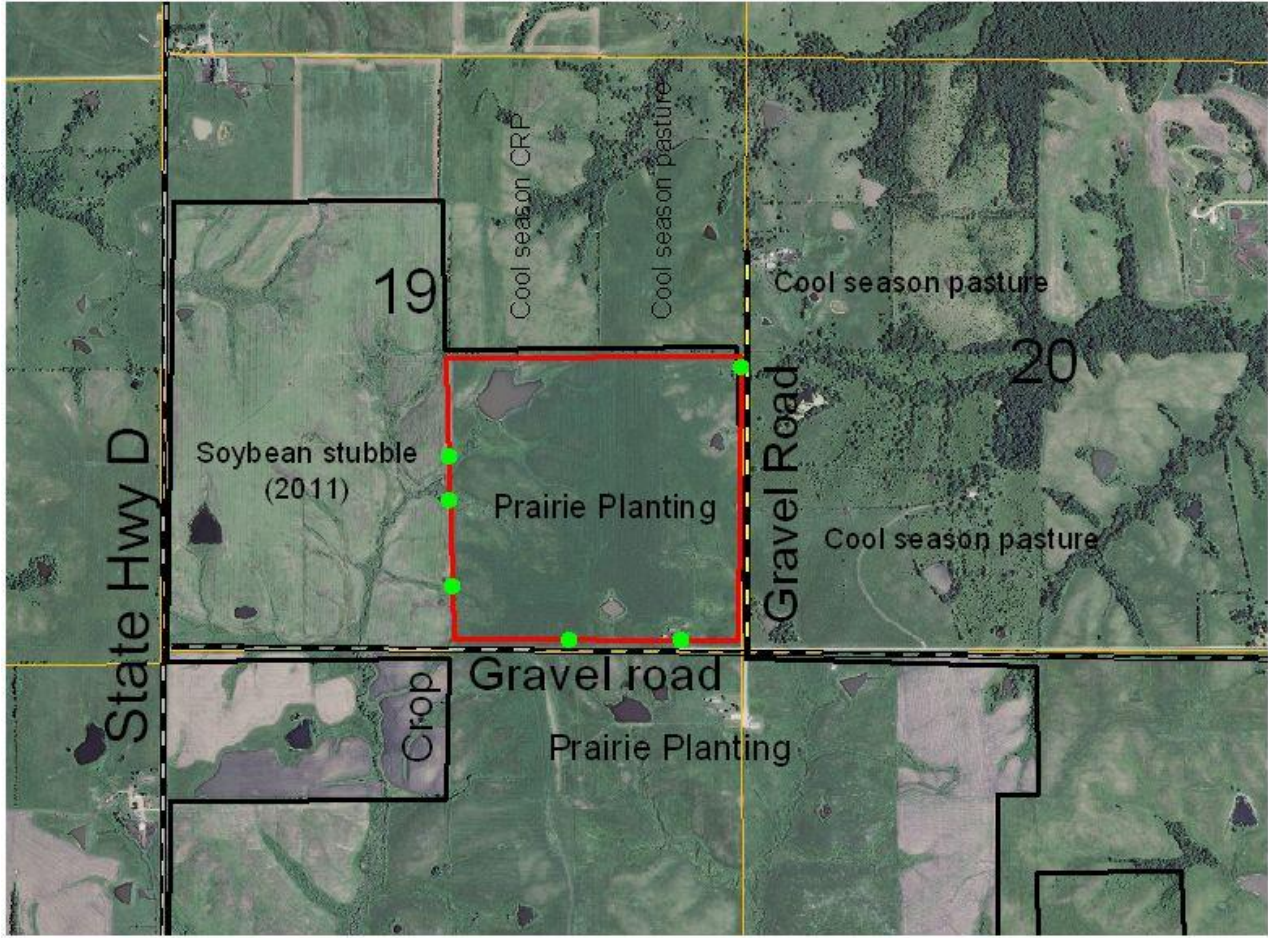
Recommendation for approval is not granted. Prescribed fire plan should be re-submitted for technical review subject to the completion of all requirements listed in the comments section, or on the Prescribed Fire Plan.

Technical Reviewer Signature: 

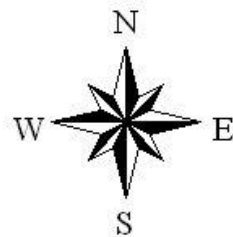
Date Signed: 01/03/2019

Qualification and Currency: RXB2

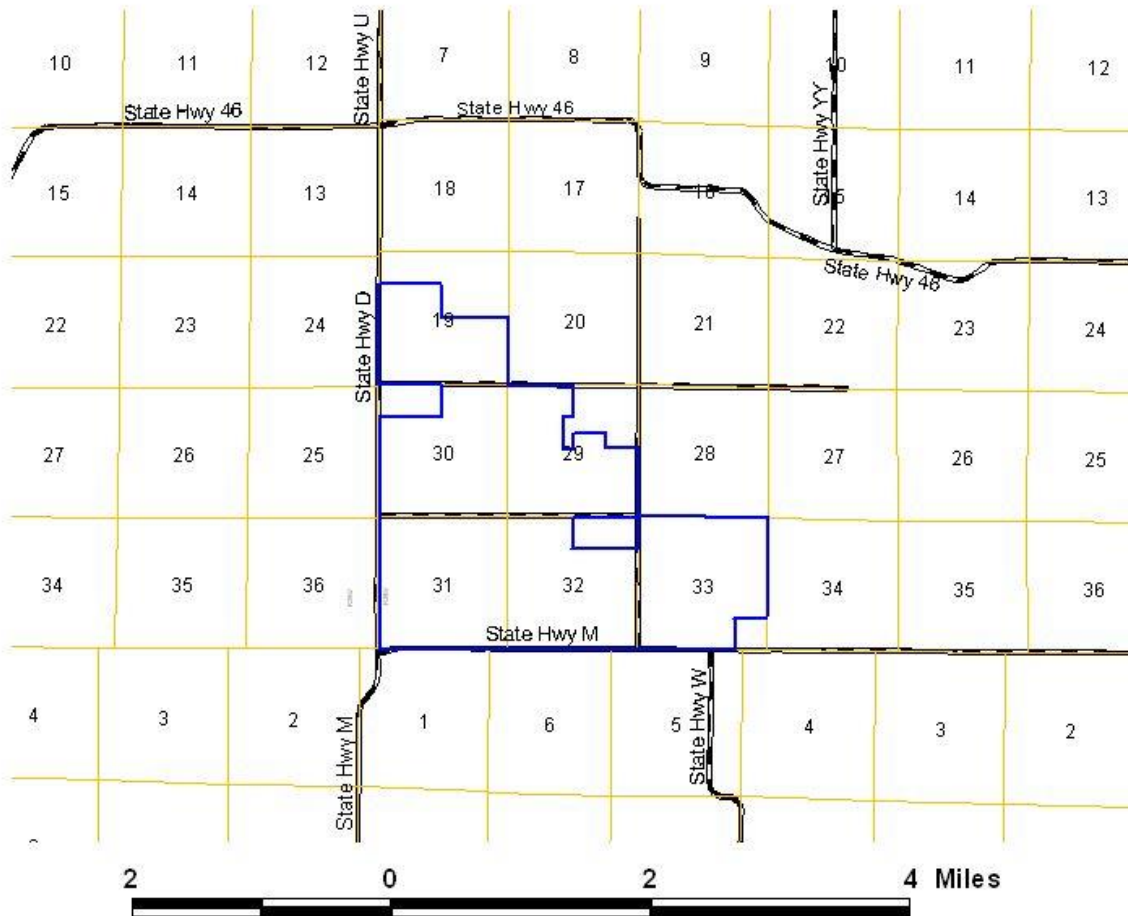
Burn Unit Fuels/Crew Map Dunn Ranch Unit W1A, W1B



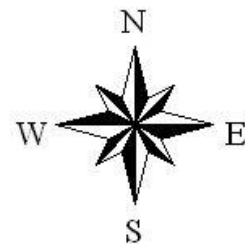
- Gates and ditch crossings
- Burn Unit W1A W1B
- Roads
- Dunn Ranch boundary
- Section Lines



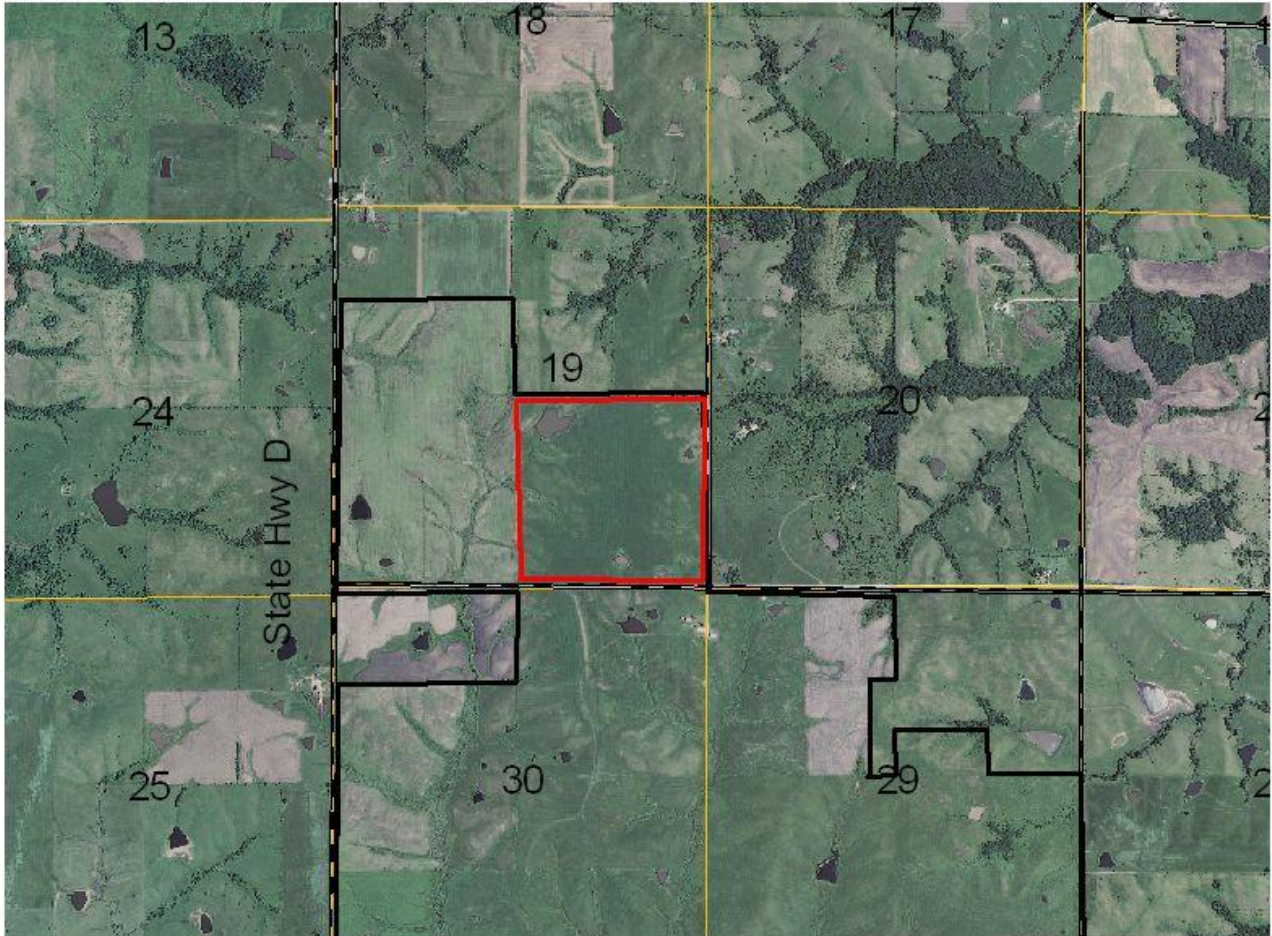
Dunn Ranch Location Map Harrison County, Missouri







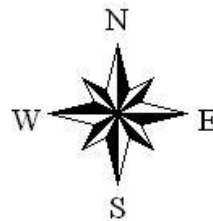
-  Dunn Ranch boundary
-  Section Lines
-  Roads



Fire Unit Aerial Map Dunn Ranch Unit W1A, W1B



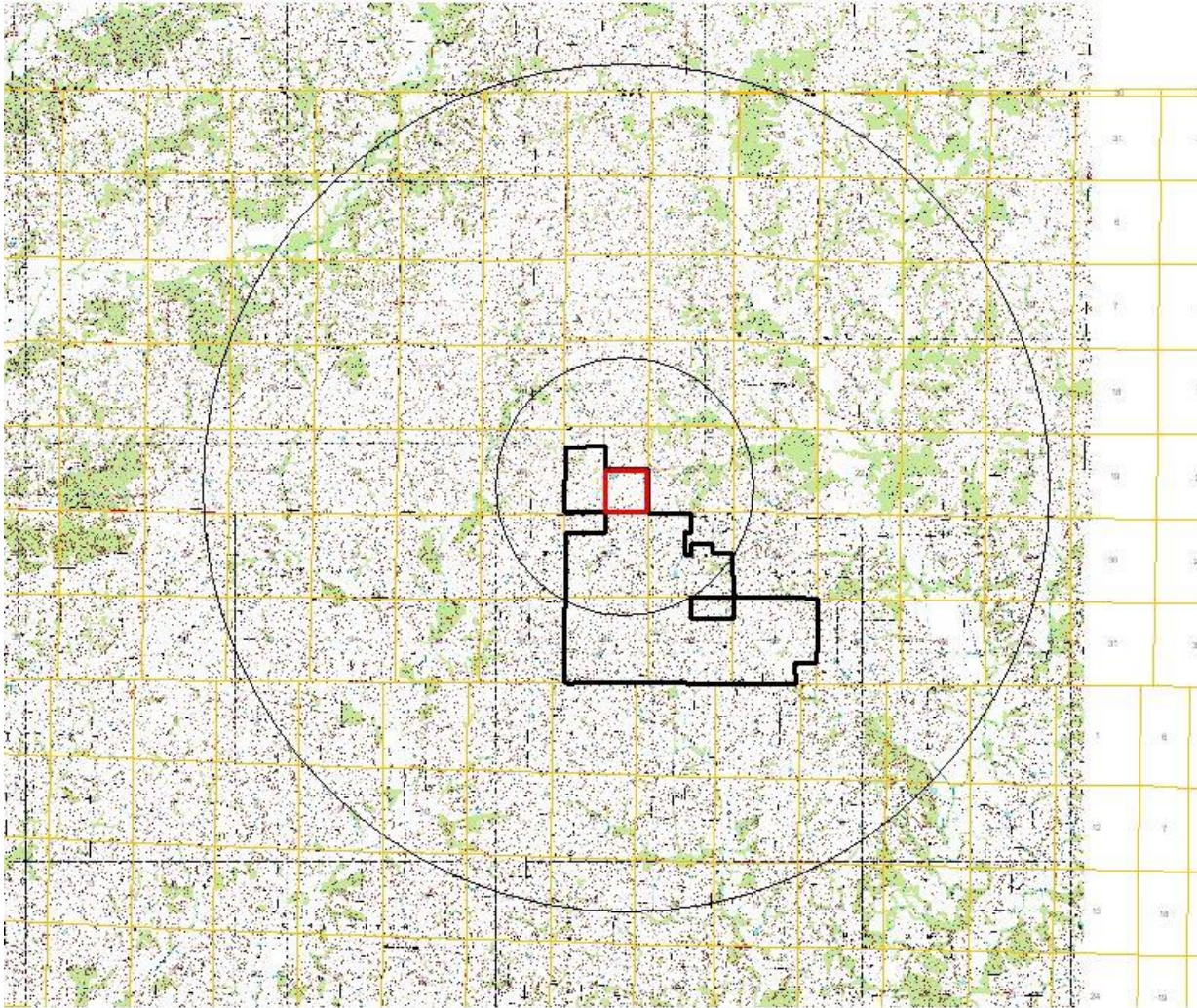
-  Burn Unit W1A W1B
-  Roads
-  Dunn Ranch boundary
-  Section Lines






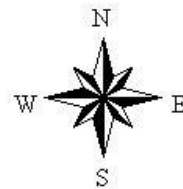
Smoke Screening Map

Dunn Ranch

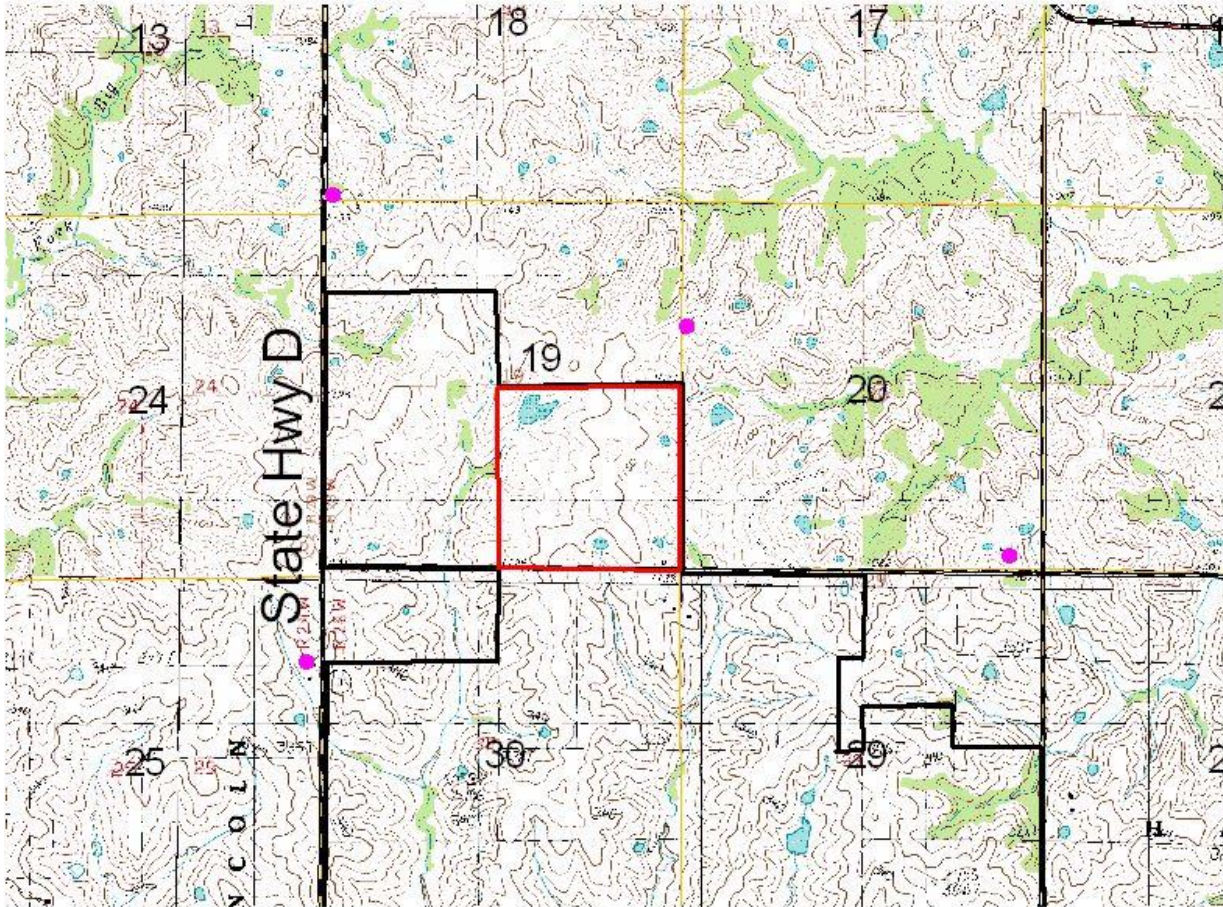
Unit W1A, W1B



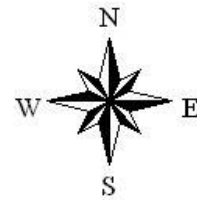
-  Burn Unit W1A W1B.shp
-  Dunn Ranch boundary
-  Section Lines



Neighbor Contact Map Dunn Ranch Unit W1A, W1B

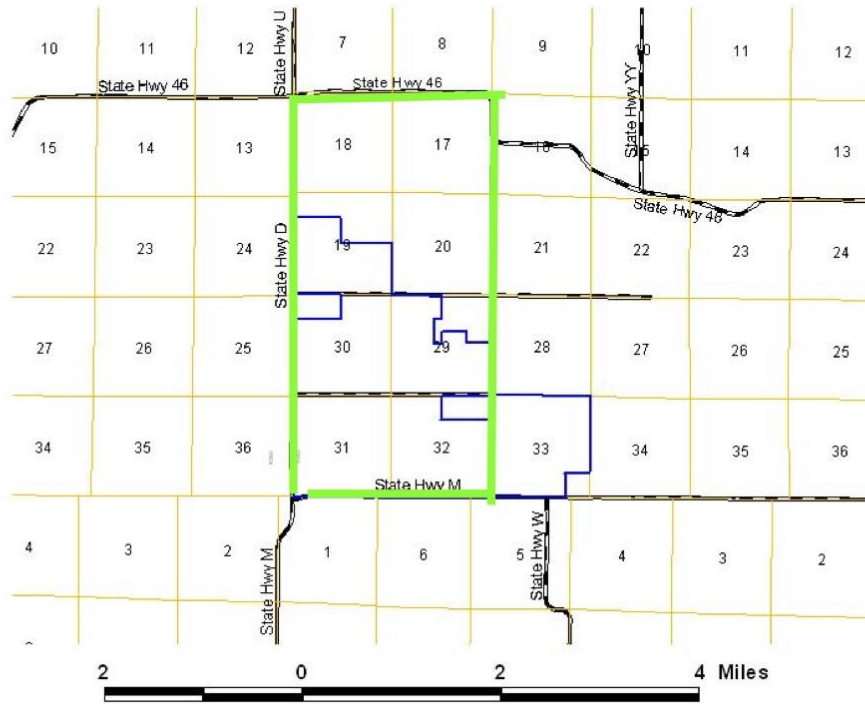


- Neighbor contacts W1A, W1B
- Burn Unit W1A W1B
- ⚡ Roads
- ▭ Dunn Ranch boundary
- ▭ Section Lines



Contingency
Map

Dunn Ranch Location Map Harrison County, Missouri



-  Dunn Ranch boundary
-  Section Lines
-  Roads

